

LAMB OF GOD APPLIQUE MACHINE EMBROIDERY DESIGN - 6 SIZES

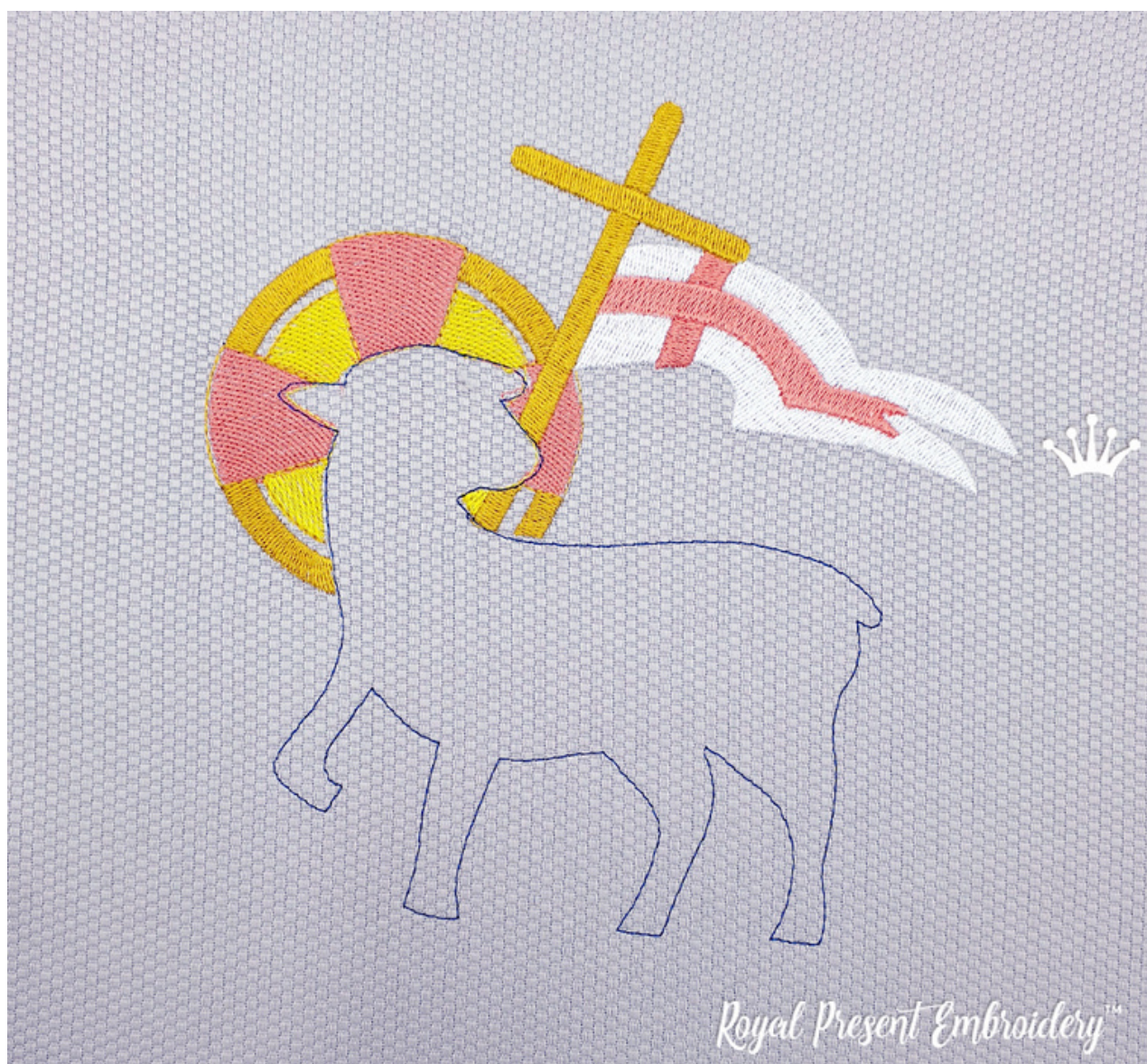


HOW TO CREATE, A STEP-BY-STEP PROCESS

Visit royal-present.com

INSTRUCTIONS

- To create an appliqué, it's important to hoop the fabric you plan to use along with a stabilizer for added support.
- After the machine has finished creating the outline, stop the machine and carefully remove the hoop from the embroidery machine.



HOW TO CREATE, A STEP-BY-STEP PROCESS

[Visit royal-present.com](http://royal-present.com)

INSTRUCTIONS

- Before starting the appliqué, place a piece of fabric in the designated area. Afterwards, return the hoop to the machine.
- The machine will sew an outline. Once she has finished doing this, remove the hoop from the machine.



HOW TO CREATE, A STEP-BY-STEP PROCESS

[Visit royal-present.com](http://royal-present.com)

INSTRUCTIONS

- Please return the hoop to the machine and complete the embroidery.
- Your applique is ready. Remove the hoop and tear off the unnecessary stabilizer..



HOW TO CREATE, A STEP-BY-STEP PROCESS

Visit royal-present.com



Royal Present Embroidery™

HOW TO CREATE, A STEP-BY-STEP PROCESS

Visit royal-present.com