

# LADYBUGS PROTECTIVE FACE MASK FOR TEENS AND ADULT FREE MACHINE EMBROIDERY DESIGN - 3 SIZES



HOW TO CREATE, A STEP-BY-STEP PROCESS

[Visit royal-present.com](https://royal-present.com)

# SUPPLIES AND TOOLS

The right and left sides are two different images. You should stitch out both of them. The sizes of the mask are approximate; it all depends on the individual's scale.

This mask does not claim it to prevent any sort of disease or virus. This Mask is not a hospital-grade mask.

- main fabric – about 13"x 7", cotton (tightly woven, pre-washed)
- lining fabric about 13" x 6", cotton (tightly woven, pre-washed)
- 1/16" round cord bead elastic (preferable), or 1/8" flat elastic
- scissors (or rotary cutter and a cutting mat)
- iron and ironing board
- sewing machine (or you can do it by hand)
- small metal strip / wire (optional)

For the producing Ladybugs Protective Face Mask for Teens and Adult Free Machine Embroidery Design – 3 sizes please use the instruction for Ladybugs Protective Face Mask for Girls Free Machine Embroidery Design – 2 sizes

The production process is identical for both patterns.

**HOW TO CREATE, A STEP-BY-STEP PROCESS**

[Visit royal-present.com](http://royal-present.com)



# STAGE 1

Embroider two files: RPE-2471-Left side и RPE-2471-Right side



We recommend embroidering the last two colors (these are two contours) in the color of the fabric you have chosen for the mask

**HOW TO CREATE, A STEP-BY-STEP PROCESS**

[Visit royal-present.com](http://royal-present.com)

# STAGE 1

In our picture, the extreme outline is the mark. You need to cut the embroidered part of the mask along the mark.



The inner line is the mark you will use to sew the mask.

**HOW TO CREATE, A STEP-BY-STEP PROCESS**

[Visit royal-present.com](http://royal-present.com)



## STAGE 2

Take scissors and cut out two parts of the mask. Use the extreme outline as a guide.



**HOW TO CREATE, A STEP-BY-STEP PROCESS**

[Visit royal-present.com](http://royal-present.com)



## STAGE 2

You should get these two parts of the mask.



Set them aside. Use a cloth for the back of the mask, i.e. for the lining. In our case, this is the yellow color of the fabric.

**HOW TO CREATE, A STEP-BY-STEP PROCESS**

[Visit royal-present.com](http://royal-present.com)



# STAGE 3

The length of the lining fabric is about 13 inches or 33 centimeters. Height is about 8 inches or 20 centimeters.



Fold the lining fabric in half and iron.

**HOW TO CREATE, A STEP-BY-STEP PROCESS**

[Visit royal-present.com](http://royal-present.com)



# STAGE 3

Place one piece of the mask on a lining cloth.



Take an air-erase marker.

**HOW TO CREATE, A STEP-BY-STEP PROCESS**

[Visit royal-present.com](http://royal-present.com)



## STAGE 3

Draw an outline around the embroidered part of the mask.



Take the scissors.

**HOW TO CREATE, A STEP-BY-STEP PROCESS**

[Visit royal-present.com](http://royal-present.com)



# STAGE 3

Cut the fabric along the outline.



*Royal Present Embroidery™*

You should have two pieces of mask liner.

**HOW TO CREATE, A STEP-BY-STEP PROCESS**

[Visit royal-present.com](http://royal-present.com)



# STAGE 3



HOW TO CREATE, A STEP-BY-STEP PROCESS

[Visit royal-present.com](http://royal-present.com)



# STAGE 4

Fold the two pieces of the embroidered mask right sides together.



**HOW TO CREATE, A STEP-BY-STEP PROCESS**

[Visit \[royal-present.com\]\(http://royal-present.com\)](http://royal-present.com)



# STAGE 4

Sew the two pieces of the embroidered mask. For reference, use the line we made for this purpose



**HOW TO CREATE, A STEP-BY-STEP PROCESS**

[Visit royal-present.com](http://royal-present.com)



# STAGE 4

You can use a sewing machine, if you have one, or sew the mask by hand.



**HOW TO CREATE, A STEP-BY-STEP PROCESS**

[Visit \[royal-present.com\]\(https://royal-present.com\)](https://royal-present.com)



# STAGE 4

Try to sew in such a way that your basting stitch remains outside. Otherwise, you will need to whip it, as it will be visible on the face of the mask.



**HOW TO CREATE, A STEP-BY-STEP PROCESS**

[Visit royal-present.com](http://royal-present.com)

# STAGE 4

When you have sown the two parts of the mask, iron the seam and mask.



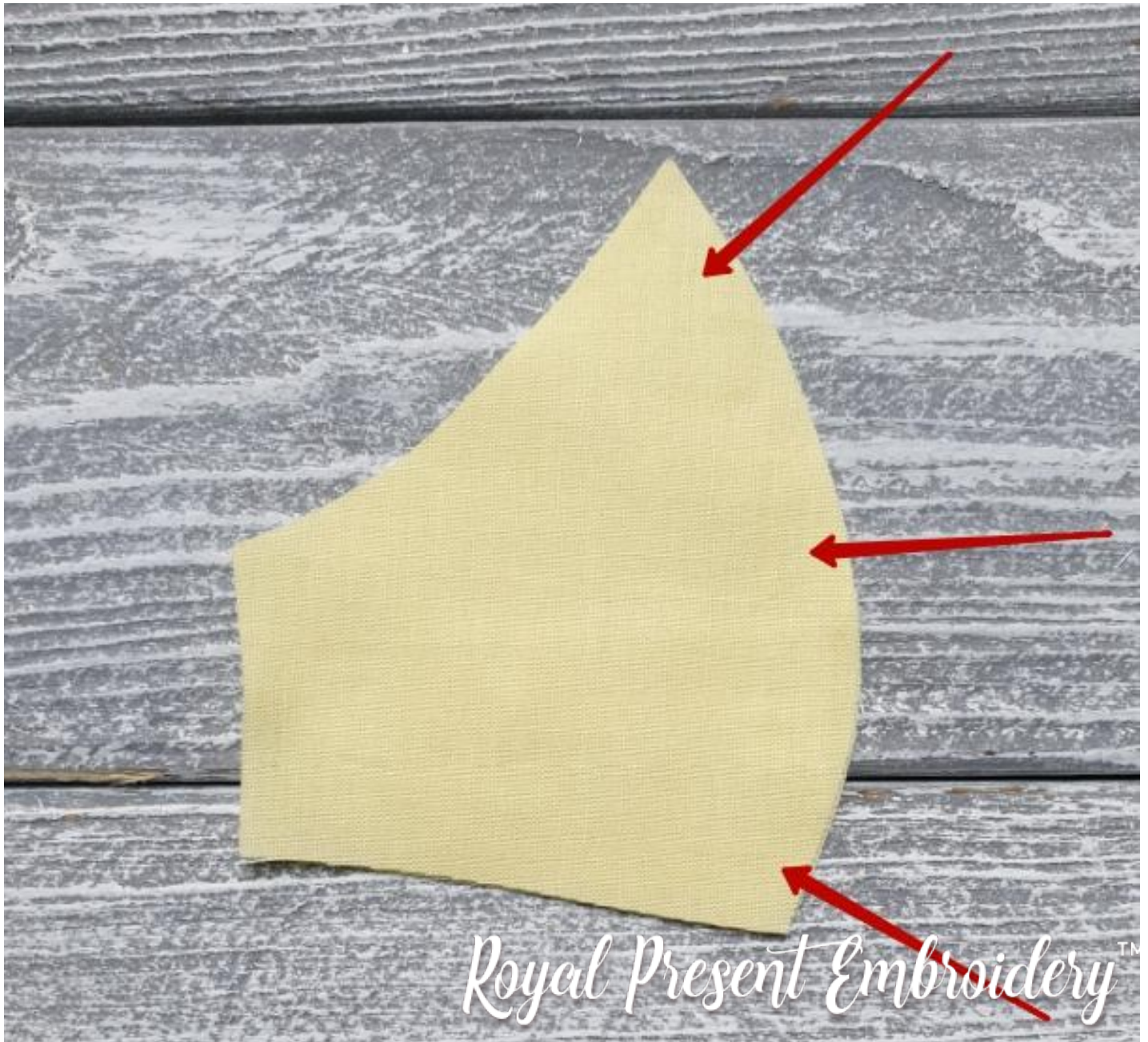
**HOW TO CREATE, A STEP-BY-STEP PROCESS**

[Visit royal-present.com](http://royal-present.com)



## STAGE 5

Now let's get down to the lining. Take two pieces of lining and sew them together, like you just sewed the pieces of the embroidered mask.



**HOW TO CREATE, A STEP-BY-STEP PROCESS**

[Visit royal-present.com](http://royal-present.com)

# STAGE 5



HOW TO CREATE, A STEP-BY-STEP PROCESS

[Visit royal-present.com](http://royal-present.com)



# STAGE 5



**HOW TO CREATE, A STEP-BY-STEP PROCESS**

[Visit royal-present.com](http://royal-present.com)



# STAGE 5

To make the mask fit well to the face, make cuts; try not to damage the stitching.



**HOW TO CREATE, A STEP-BY-STEP PROCESS**

[Visit \[royal-present.com\]\(http://royal-present.com\)](http://royal-present.com)



# STAGE 5

Iron the seam well.



**HOW TO CREATE, A STEP-BY-STEP PROCESS**

[Visit \[royal-present.com\]\(http://royal-present.com\)](http://royal-present.com)



# STAGE 6

Rubber band.

Take two pieces of elastic tape, approximately 7-8 inches or 16-19 centimeters. It depends on the volume of your head.



**HOW TO CREATE, A STEP-BY-STEP PROCESS**

[Visit royal-present.com](http://royal-present.com)



# STAGE 6

Fold the two parts of the mask right-side up.



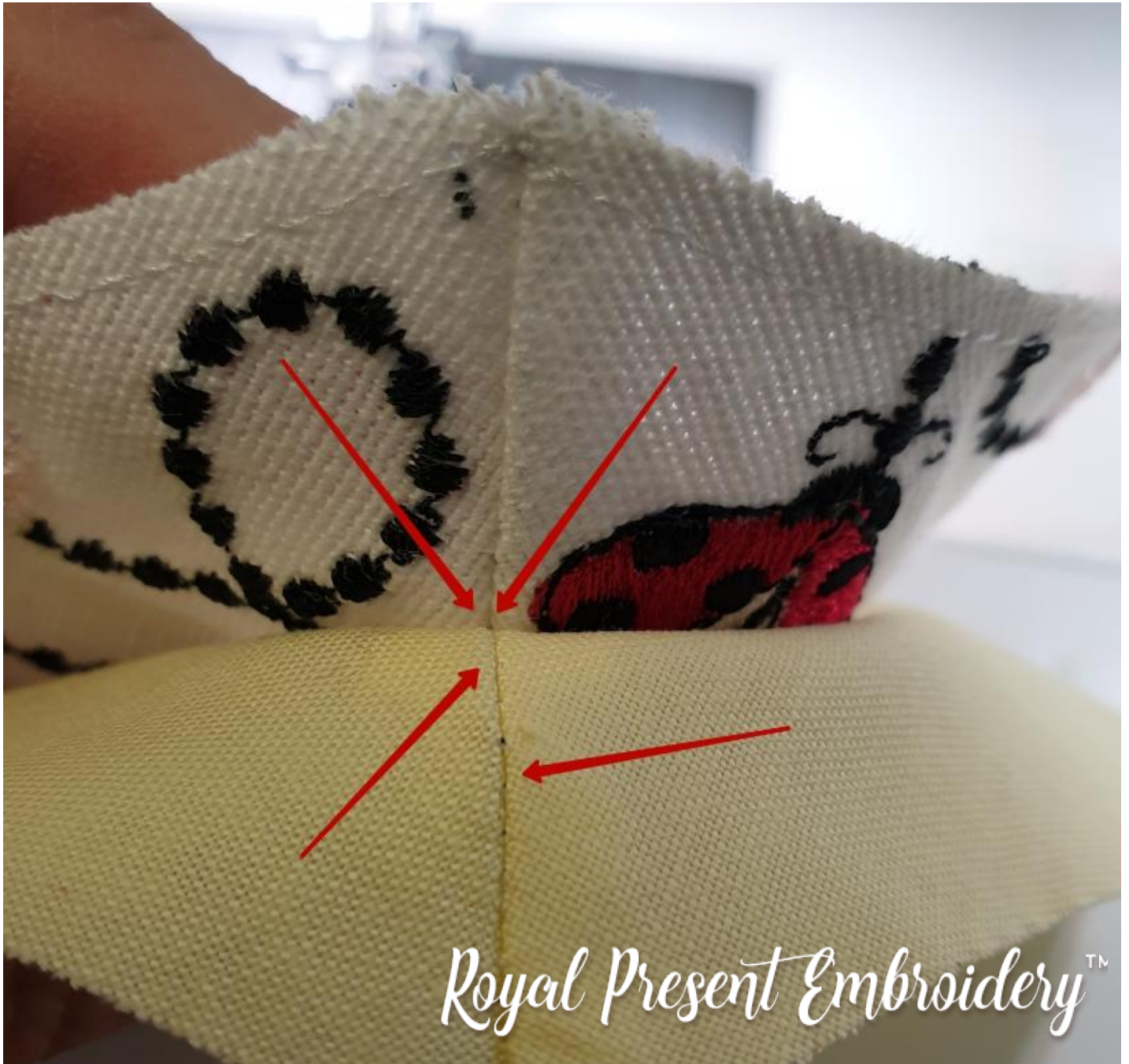
HOW TO CREATE, A STEP-BY-STEP PROCESS

[Visit royal-present.com](http://royal-present.com)



## STAGE 6

Align the center seam on the face of the mask and pad. You need to sew a mask.



*Royal Present Embroidery™*

**HOW TO CREATE, A STEP-BY-STEP PROCESS**

[Visit royal-present.com](http://royal-present.com)



# STAGE 6

Place elastic bands inside and sew on as you sew the two parts of the mask.



**HOW TO CREATE, A STEP-BY-STEP PROCESS**

[Visit \[royal-present.com\]\(http://royal-present.com\)](http://royal-present.com)

# STAGE 7

Leave a small hole in the part of the mask to turn the mask out.



*Royal Present Embroidery™*

**HOW TO CREATE, A STEP-BY-STEP PROCESS**

[Visit royal-present.com](http://royal-present.com)



## STAGE 8

After you have turned the mask inside out, iron it.



*Royal Present Embroidery™*

**HOW TO CREATE, A STEP-BY-STEP PROCESS**

[Visit royal-present.com](http://royal-present.com)

# STAGE 9

Sew the hole either manually with a blind stitch.



**HOW TO CREATE, A STEP-BY-STEP PROCESS**

[Visit royal-present.com](http://royal-present.com)



# CONGRATULATIONS!

Your face mask is now ready. Enjoy it or sew more to give others. Let us know how you did. We would love to hear from you and see pictures of your face masks.



COPYRIGHT © 2020 ROYAL-PRESENT.COM - ALL RIGHTS RESERVED

**HOW TO CREATE, A STEP-BY-STEP PROCESS**

[Visit royal-present.com](https://royal-present.com)